

Plugin: TACI - Telnet Action Command Interface

Konzept | Concept | Projet | Concepto

GeViScope provides an internal optional to send and receive actions system-wide. The normal method of externally sending and receiving actions is provided by the GeViScope SDK. However, in a number of situations it is not possible to use the Win32-based SDK. TACI (Telnet Action Command Interface) thus provides an option for sending and receiving actions in ASCII format. TACI converts these ASCII actions into normal GeViScope actions, or conversely converts GeViScope actions into ASCII format for transmission over a Telnet port.

Gut zu wissen | Good to know | Bon à savoir | Conviene saber

Your software must be capable of sending and receiving text in ASCII format.

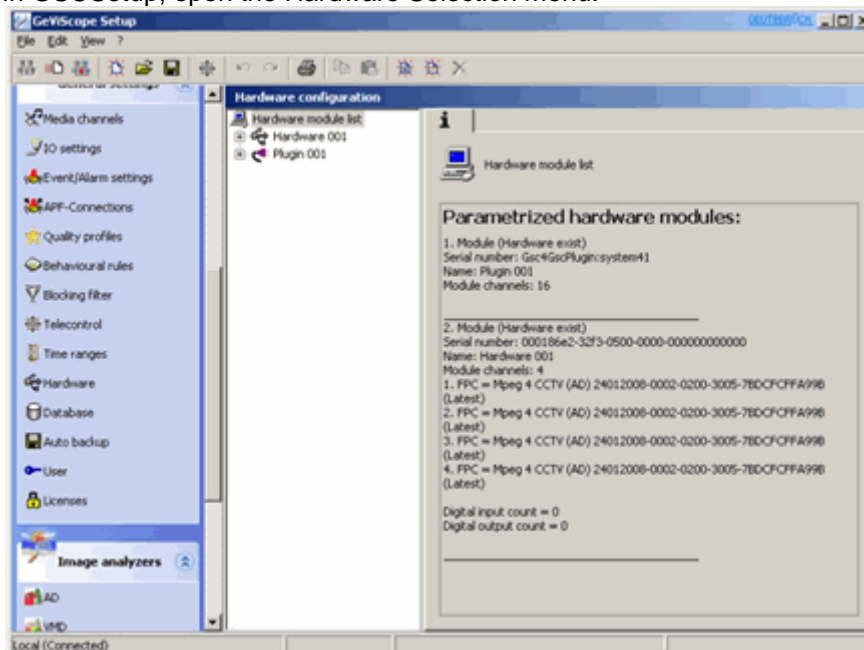
Use the description of the actions in the SDK to become familiar with the actions and their parameters. The GSCPLC Simulator helps you to find the GeViScope directory.

Prozedur | Procedur | Procédure | Procedimiento

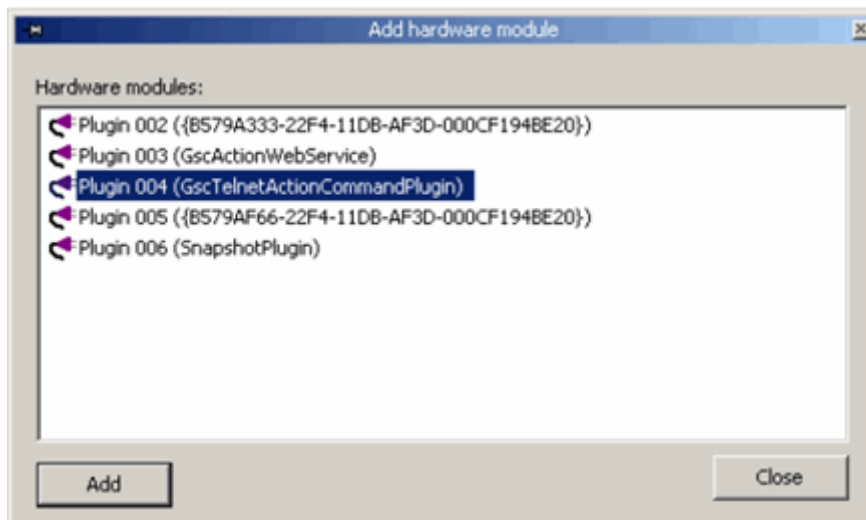
How to configure TACI

Ensure that the file GscTelnetActionCommandInterface.dll has been copied to the directory GeViScope/Mediaplugins. Copy the file to this location if it is not already there.

In GSCSetup, open the Hardware Selection menu.

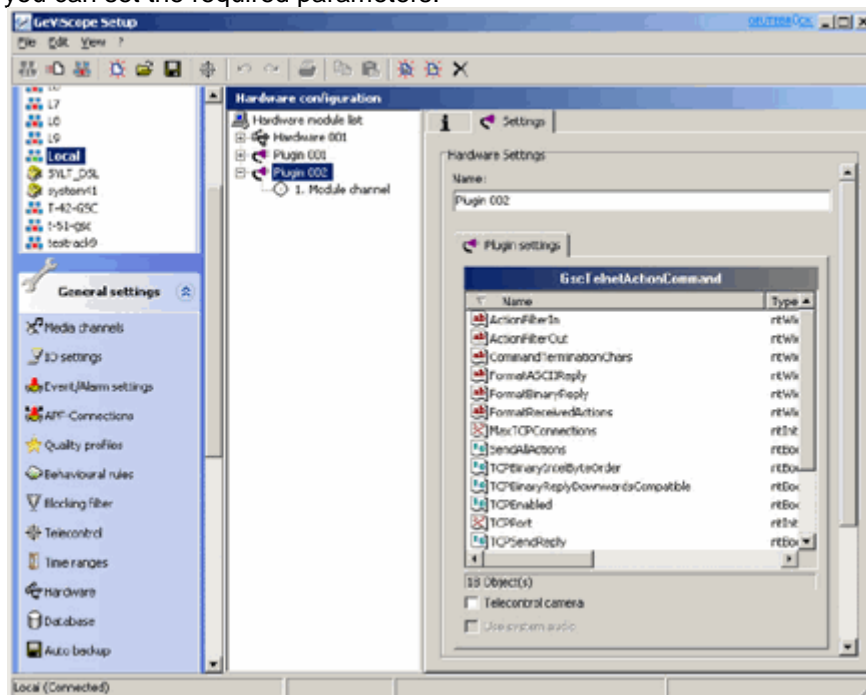


Click with the right mouse button in the list view and select Add in the popup menu.



Select the plugin GscTelnetActionCommandPlugin (in our example, Plugin 004) by marking it and clicking on Add.

The TACI plugin is now entered as a hardware resource in the hardware module list. If you click on it, you can set the required parameters.



The following describes the parameters:

ADVICE

UDP is not currently implemented.

ActionFilterIn/ ActionFilterOut	Regular Expression to filter incoming or outgoing messages. * means pass all.
CommandTerminationChars	Chars defining the end of a command
FormatASCIIReply	Format string of the reply from TACI {0}: Return value 3: Error(No action 4: OK) {1}: Position of echo {2}: Send termination signal at the end (CR/ LF)
FormatBinaryReply	Obsolete
FormatReceivedActions	{0} Position of Action in the received string
MaxTCPVonnections	Maximum number of allowed TACI connections for one server
SendAllActions	Forward all actions from GeviScope to Telnet
TCPBinaryIntelByteOrder	Obsolete
TCPBinaryRepyDownwardsCompatible	Obsolete

TCPEnabled	Obsolete
TCPPort	Number of TCP Port for the telnet connection
Number of TCP Port for the telnet connection	If set tot true you will receive an echo of your command

Hello World!

After you have configured TACl as described above, simply open a Telnet connection using the Windows Telnet program. To do this, open the CMD, tip in *telnet* and press enter.

Then type *o [hostname] 12007* .

You can now send a simple user action, for instance *CustomAction (1,"HelloWorld")*. In the PLC Simulator, you see the actions that you have sent and you can send actions from the PLC Simulator to the Telnet clients.